

ECS
BROKERAGE
EVENT

SME Pitches

BigTRI Bilisim Anonim Sirketi

Contact person name: Berkay Yaman

Organisation: BigTRI

E-mail: berkay.yaman@bigtri.net

Company at a glance



Connected & Automated Mobility



Located in **technology development area** in **Istanbul, Turkey**



C-ITS test site for validating **Connected and Automated** Mobility solutions



Internet of Things (IoT)



Close collaboration with **academy** and **industry** through R&D projects



Collaboration with **Telecommunication Operators, OEMs** and **Municipalities**



Digital Industry



Spin-off R&D company
Company Size: 10-20 Employees (R&D Engineer)

Highlighted Products



Find out more at bigtri.net

Company's Activities

BigTRI's role within international projects:

- Value chain between **academia**, **technology providers**, and **OEMs**
- National & technical coordination
- **Technology** and **use case** provider
- Verification & Validation
- Demonstration
- Dissemination

5+

Horizon 2020/Europe Projects
(Completed / Ongoing/ Accepted / Proposal phase)

20+

Nationally funded R&D projects
(Project coordination experience)

15+

Years of experience in C-ITS domain

BigTRI is a member of:



Ongoing Projects

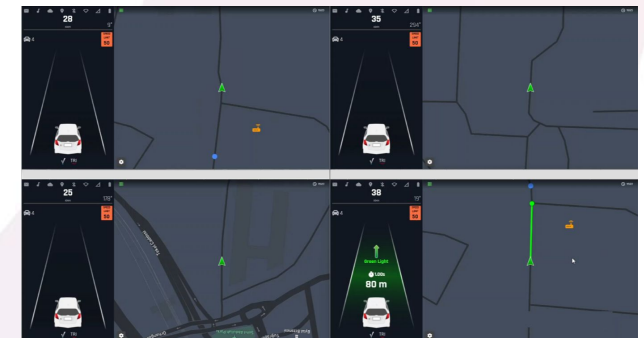
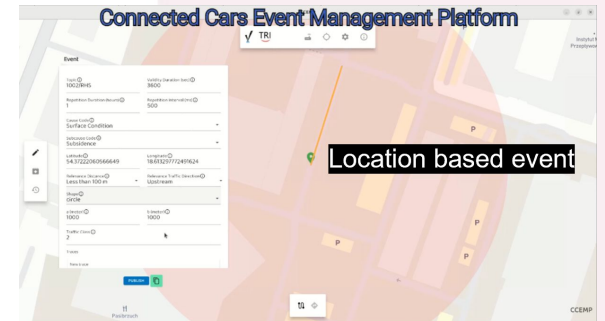


Key Competences

- Connected and Autonomous vehicles
 - V2X communications
 - Safe driving
 - Vulnerable Road User (VRU) safety
 - Perception
- Monitoring and management in a heterogenous C-ITS infrastructure
 - Energy efficiency in traffic
 - Efficient distribution of workloads
- Software defined vehicles
 - Secure OTA updates
 - Automotive edge platforms within **computing continuum**
- Verification & Validation
 - Cybersecurity and safety testing
 - Test scenario generation
- C-ITS test & demonstration site (VeST-AVe)

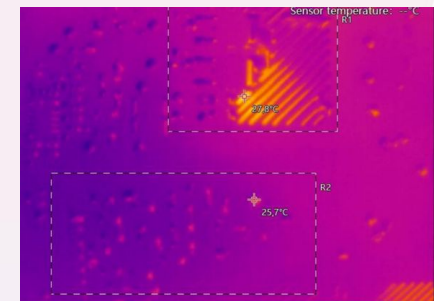
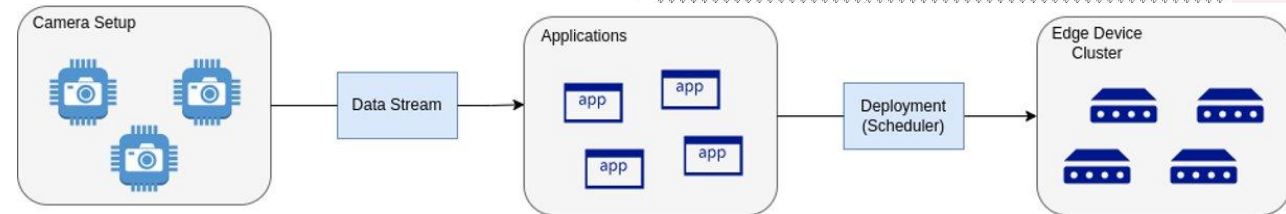


ECS BROKERAGE EVENT



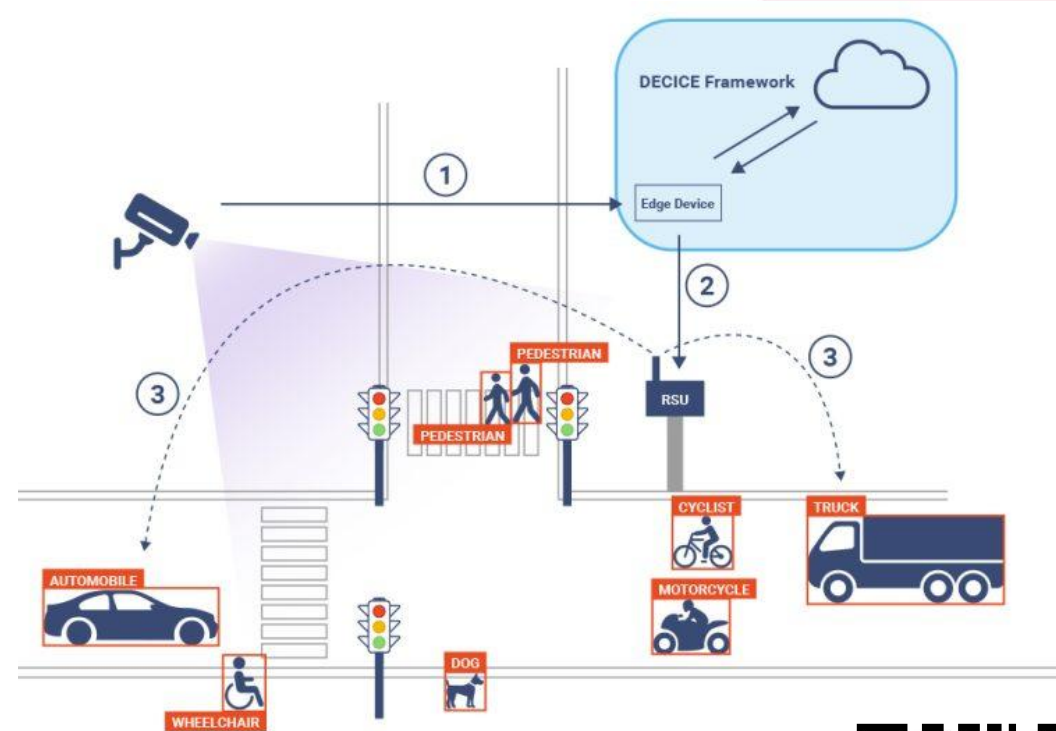
Key Competences

- Edge AI
 - Image processing
 - AI accelerators
- Wireless network monitoring & security analysis
 - Availability of data, service, device
 - Detection of security attacks and anomalies
- Digital Twins
- End of line testing
- AI-based predictive maintenance



Device-Edge-Cloud Intelligent Collaboration framEwork (DECICE)

- Computing continuum **Digital Twin**
 - Integration of cluster metrics generated from **nodes**, **network** and underlying **orchestration platform** (e.g. Kubernetes)
- Effective collection of network metrics of the cluster
- End-user and telemetry APIs
- Efficient and effective deployment of workloads accross **cloud**, **edge**, and **HPC**
 - Use case owner: **Vulnerable Road User (VRU) safety** in intelligent intersections



[Newsletter article:](#)



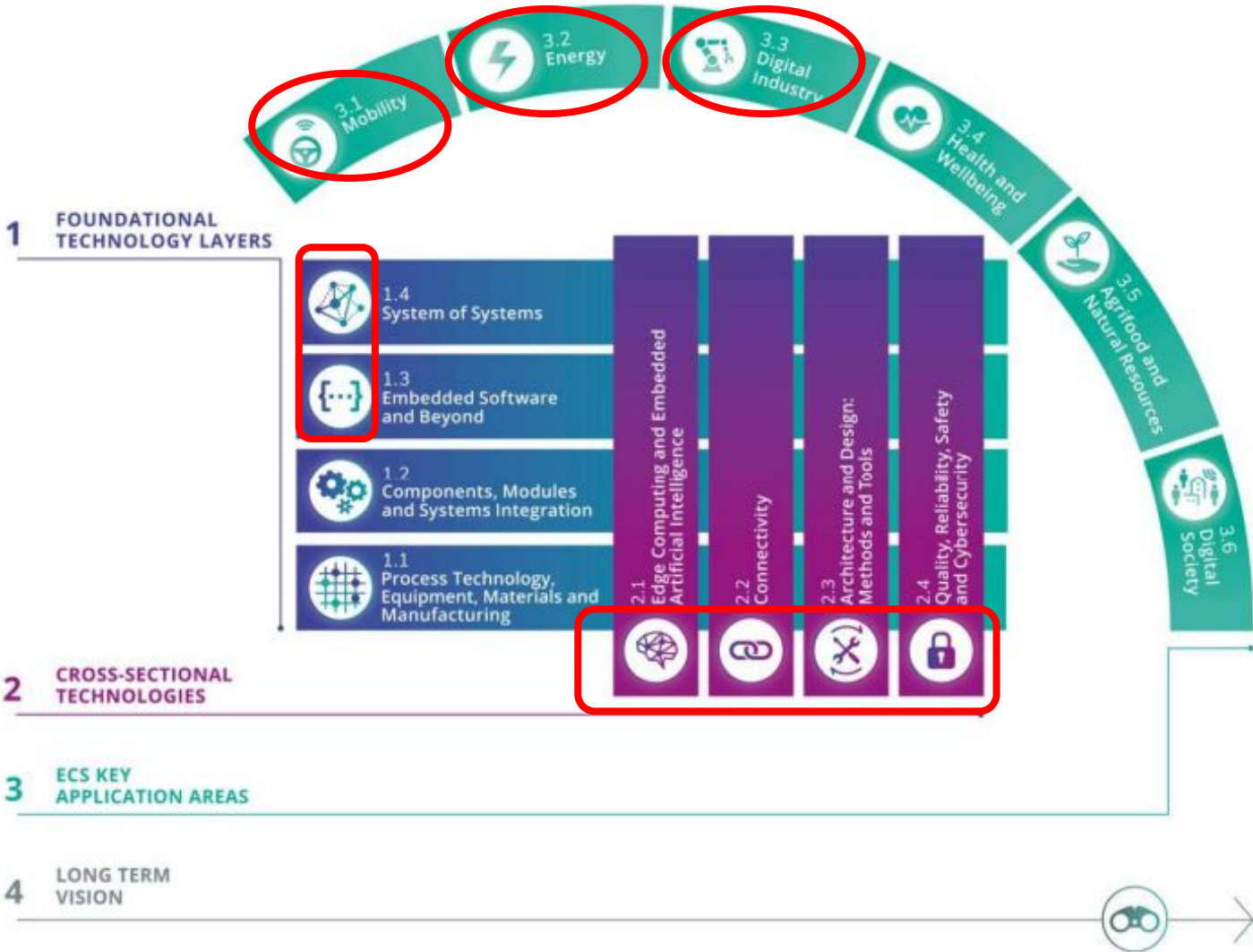
Use Case Idea

Title: Efficient EV Charging Spot Monitoring and Notification

Addressed Key Application Areas in SRIA 2025: Mobility, Energy, Digital Society

- AI-driven **predictive decision-making** and **assistance**, for multi-actor coordination in complex traffic scenarios.
 - **ETSI TS 101 556-1** V1.1.1 (2012-07): Electric Vehicle Charging Spot Notification Specification
- Monitoring of vehicle charging stations to detect anomalies and connectivity issues
- Effective and efficient use of **renewable energy** in a **grid-based energy infrastructure**

ECS SRIA 2025



ECS
BROKERAGE
EVENT

THANK YOU

BigTRI Bilisim Anonim Sirketi

Contact Person: Berkay Yaman
E-mail: berkay.yaman@bigtri.net



bigtri.net